



THE LONDON SCHOOL
OF ECONOMICS AND
POLITICAL SCIENCE

#SustainableLSE

Annual Sustainability Report 2022/23

Foreword by President and Vice Chancellor	3
#SustainableLSE 2022/23 Highlights	4
Approach and Decision-Making	5
Education	7
Research	11
Engagement and Leadership	14
Investment	19
Collaboration	21
Our School	27
Sustainability Awards	44



Sustainable Development Goals

LSE's work on sustainability aligns with the UN Sustainable Development Goals. Visit sdgs.un.org/goals to find out more about the specifics of each goal.



The progress tracker for our next steps can be found on our [webpage](#).



Foreword by LSE President and Vice Chancellor

As a leading social sciences university in the heart of London, LSE has a key role to play in responding to the global climate emergency. Through the research and external engagement we undertake to further global understanding; the education we provide to students who will show their own leadership on this issue; and how we manage our own built environment; we take this responsibility seriously as part of our mission to shape a sustainable world.

LSE released its current Sustainability Strategic Plan in October 2020, as part of our LSE 2030 strategy, and the plan continues to act as a catalyst for sustainable action School-wide. It focuses on six key areas of focus, including Research, Investment, Engagement and Leadership, Education, Our School (campus operations) and Collaboration.

With the post-COVID return to normal campus operations, it has been wonderful to see our estate thriving, but with this comes the challenge of managing it sustainably, from construction, to travel, to energy usage. Despite these obstacles, we are pleased to be in the top 10 per cent of universities worldwide for our sustainability (QS Sustainability Rankings 2023), and top in the UK for the “sustainable institutions” lens of the ranking.

This report provides an overview of sustainability initiatives across the School for the academic year 2022/23, and the progress made across the six themes of the plan.

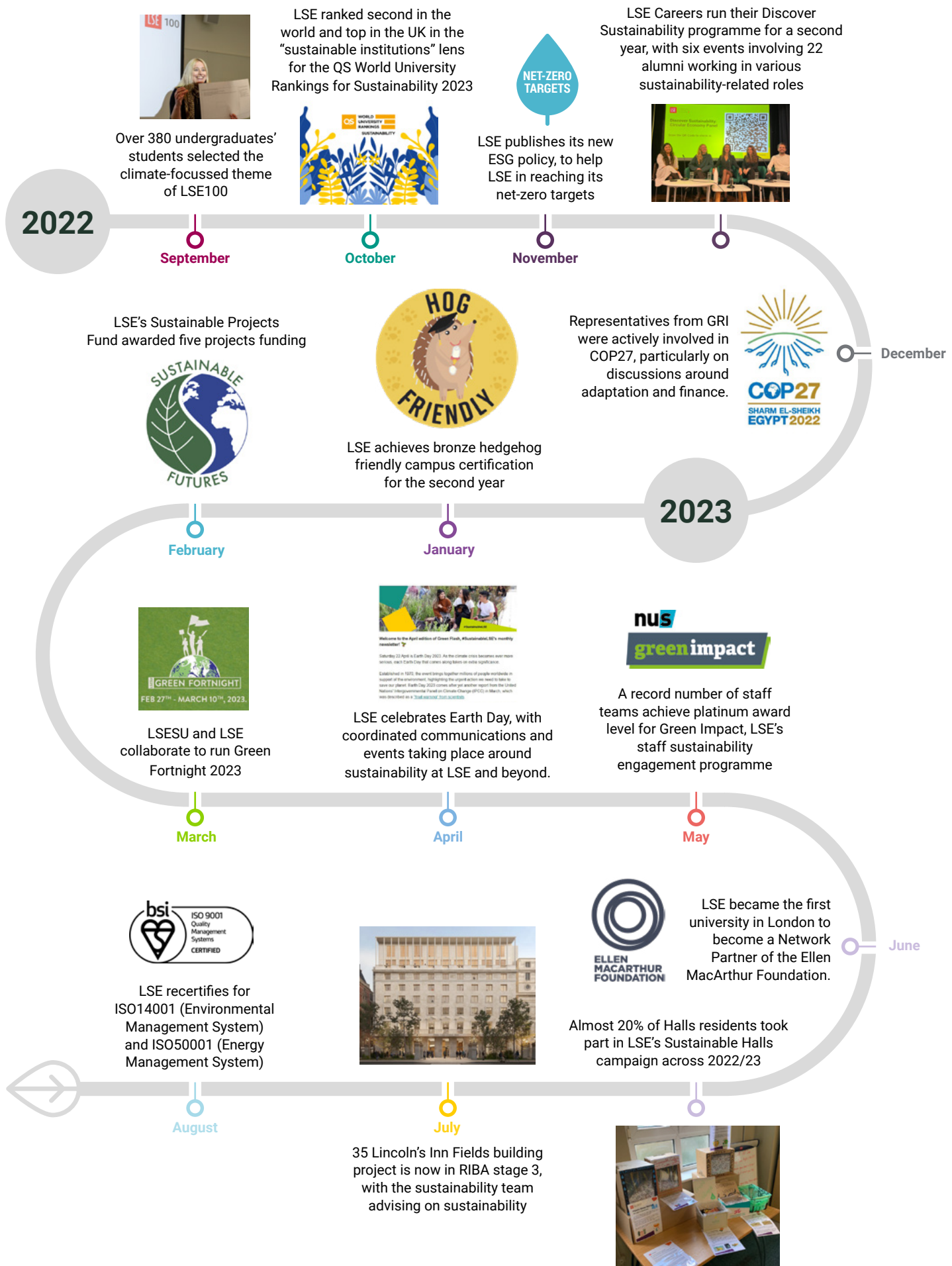
It is critical to our success that the entire LSE community plays their part: students, academics, professional staff, and alumni. Please join us on our journey to create a sustainable LSE and shape a more just and sustainable world.



Professor Eric Neumayer

Interim President and Vice Chancellor, LSE

#SustainableLSE 2022/23 highlights



Approach and decision-making



LSE's environmental performance is coordinated by the Estates Division's Sustainability Team, with delivery and decision-making supported by several committees and working groups including both student and staff representatives.



The **Sustainability Policy** is delivered via our Environmental Management System, which has been ISO 14001 certified since 2012.



The **Energy Policy** is delivered via our Energy Management System, which has been ISO 50001 certified since 2015.

In addition to our formal networks, we use informal networks to engage with our stakeholders in order to seek feedback and discuss ideas.

These systems establish the Sustainability Action Plan which in turn sets an annual programme of work and SMART targets. This Annual Sustainability Report details our performance against these targets.

Key stakeholders		
Internal	Students	Students LSESU and societies Students in halls of residence
	Staff	Professional Services Staff Academic Staff Senior Leadership
External	Partners and networks	Delivery partners Suppliers and contractors Collaboration networks e.g. EAUC, Ellen MacArthur Foundation Higher Education peers
	Other interested parties	LSE alumni LSE visitors Local community Regulatory and certification bodies Campaign groups, NGOs, trade unions General public

Sustainability decision-making



Governance



Council

General oversight of sustainability progress

Leadership



School Management Committee

Provide oversight of sustainability progress

Sustainability Leadership Board

Oversee and monitor the delivery of the Sustainability Strategic plan

Delivery



Education

Education Committee



Research

Research Committee



Engagement and Leadership



Collaboration



Investment

Investment Sub Committee



Our School

Sustainability Operations Group

Environmental working groups
(Estates, Students, Residences, Catering)

Local working groups
(E.g. Green Impact)



Consultation and Engagement



Students and Staff

Input various means – working groups, Green Impact teams, events, engagement with the sustainability team.

Education

Embedding sustainability across our teaching and learning experiences



Education for Sustainability Initiative

The *Education for Sustainability* initiative is an opportunity for LSE to act on our commitments to ensure we make a critical contribution to sustainability education. For educators, this means developing students' critical and systems thinking, thus preparing them for the complex challenges they will face in a workplace where sustainability will play an ever-increasing role.

Highlights

- The Eden Centre appointed a Programme Manager: Education for Sustainability, funded as part of the Education for Global Impact (EGI) agenda in Spring 2022, with 2022-23 being their first full year in post. The role has been created to explore ways to embed sustainability and sustainable development in the curriculum.
- The Programme Manager has mapped all LSE modules via LSE's Calendar, Moodle, and Google Search to gain an overview of the sustainability-related modules taught throughout the school. Currently, the Programme Manager is working on updating the list of courses offered at LSE with a focus on sustainability to identify any new additions for the upcoming academic term. The list is due to be finalised by Autumn term 2023 and will be overseen by the TQARO team.
- To explore good practices around education for sustainability, stay informed about advancements in the field, and continually seek areas for improvement, the Programme Manager has benchmarked around 30 universities, both in the UK and abroad.
- The Education for Sustainability Network (first launched in 2021/22) has continued to hold termly meetings and engage staff in embedding sustainability in the curriculum.
- EGI funds were secured by the Programme Manager for a student partnership project to support the integration of sustainability into the curriculum in 2022/23. This funding has supported 10 students during the academic year, working as research assistants to identify sustainability topics or case studies for a specific course across all School departments. A new funding application has been submitted to replicate the initiative in the next academic year.
- The new **Education for Sustainability** landing page is now part of the Eden Centre website, with updated resources and a best-practice section for academic staff. The Programme Manager has been working with LSE academic staff to record videos in which they explain their approach to education for sustainability, as well as sharing some best practices with the rest of the academic staff to learn from.

- The Eden Centre organised Atlas workshops for academic staff on Education for sustainability to expand on which approaches can be taken to embed sustainability in the curriculum.
- In 2022/23 staff from the Eden Centre launched the **LSE Congress**, a simulation activity where students are invited to explore how LSE's research can contribute to the progress towards the UN 2030 Agenda for Sustainable Development.
- LSE Online, with the Department of Geography, launched a **Sustainability Certificate Course** this year (with the opportunity to bring this experience to other LSE Departments).
- As part of the **2022/23 Change Makers initiative**, selected students conducted research on topics related to sustainability and education for sustainability.
- LSE Careers ran it's **Discover Sustainability programme** for the second time. The programme included 6 events involving 22 alumni working in various roles. In Lent Term, LSE Careers also ran a careers event as part of LSESU Green Week.
- Four new courses related to sustainability were approved ("Environmental Economics", Department of Economics; "Urban Environments and more-than-human cities", Department of Geography and Environment; "Social Policy of Climate Change", Department of Social Policy; and "Political Economy of the Green Transition in Europe", European Institute).
- Surveys conducted by the TQARO team included 2/3 questions related to student satisfaction on LSE's education for sustainability, and the overall results increased from 61 per cent agreement in 2021 to 82 per cent in 2023.

Next steps

- We will introduce a keyword search on LSE Calendar and LSE Course Finder to easily navigate and identify all sustainability-related modules taught across the School.
- We will enhance collaboration with LSE students to produce student-led research around education for sustainability (e.g., LSE Change Makers).
- The Education for Sustainability team aim to hold engagement activities for the LSE community in Spring 2024, around the topic of education for sustainability.
- The Programme Manager is intended to produce additional resources for academic staff and students to learn more about Education for Sustainability and to be available on the LSE website and Moodle.
- Development of the Education strands of the new partnership with Ellen MacArthur Foundation, on circular economy.
- Further support students to pursue sustainability themes through LSE Change Makers 2023/24.

Case Study | LSE100

LSE100 is our flagship interdisciplinary course taken by all first-year undergraduate students.

In 2022/23, the course offered three themes for students to choose from during their LSE100 study, including a theme on sustainability, focused on the question “How can we avert climate catastrophe?” Over 380 students from a wide range of degree programmes chose this theme, which gave them the opportunity to engage in interdisciplinary thinking on topics such as sustainable economic models, consumption and waste, climate litigation, and climate activism, among others.



Additionally, the other two themes of LSE100 (**How can we control AI?** and **How can we create a fair society?**) also foreground sustainability throughout the course – the AI theme explores AI for sustainability and the sustainability of AI, while the fairness theme considers climate justice as a key component of intergenerational fairness.

For the group project assessment, students could choose to work on a sustainability-related topic regardless of which theme of the course they chose. In the climate theme, topics ranged from building green economies and energy transition to food and water security and deforestation.

The AI theme sustainability projects answered the question: “Will AI be an asset or a liability in efforts to prevent climate change and ensure sustainable development?”, while the fairness theme sustainability projects considered the question: “How can we ensure that our responses to environmental challenges such as climate change are fair and just?” Across the course, 87 groups focused on a sustainability-related topic for their group projects, meaning that over 400 LSE100 students engaged in interdisciplinary research on sustainability during the 2022/23 academic year.

Next steps

- In 2023/24, the climate theme of LSE100 will be updated with a renewed focus on enacting positive change in response to the climate crisis. The new title of the theme is **How can we transform our climate futures?**. The theme will foreground potential interventions from across the social sciences which can help us develop a sustainable and equitable climate future.

Case Study

Embedding Sustainability, LSESU Sustainable Futures Society

Continuing with this collaboration between Sustainable LSE and the Eden Centre which began in 2020/21, a group of students from Sustainable Futures Society have now presented their research findings on embedding sustainability in all LSE courses at an Education for Sustainability Network meeting.

Their findings on LSE's commitment towards education for sustainability and LSE students' expectations are available by contacting [**s.futures@lsesu.org**](mailto:s.futures@lsesu.org). The initiative will continue through the society in 2023/24, further supporting our objectives of student involvement with Education for Sustainability.



Research

Shaping the global sustainability debate through our research



Highlights

- Sustainability continues to be a key theme in research funding applications, making up 29 per cent of all requested funding for grants and fellowships and 21 percent of the number of submitted proposals. Thematic areas include just transitions, green finance, 15-minute cities, and community and societal resilience.
- In our internal schemes, six relevant projects have been funded via LSE's Research and Impact Support Fund 2023. They explore environmental sustainability themes, such as: food insecurity, the energy crisis, heat risk, wildlife co-existence, degrowth and green product innovation.
- During FY 2022/23, significant levels of funding (over £5.5 million) continued to be secured from new and existing supporters of the Grantham Research Institute on Climate Change and the Environment across all income-generating teams within PAGE: Foundation Partnerships, Corporate Engagement, Regular Giving, Philanthropy and Leadership Philanthropy.
 - c. £3.5 million was secured to support the new Just Transition Finance Lab (which will launch publicly in spring 2024). The new Lab will realise its vision, of harnessing the financial system to deliver climate and nature success through a people-centred approach, by fostering innovation in the practicalities of financing a just transition.
 - Funding was received towards endowing in perpetuity the *IG Patel Chair in Sustainability* and for three *Energy Economics Early Career Fellows* within the Department of Geography and Environment.
 - Over £7,250 was received through Regular Giving donations towards our Campaign's **Sustainability Impact Fund**.
- We have continued to share sustainability-themed content through our key research engagement initiatives including our Research for the World magazine; research showcase events series; public lecture programme; LSE Festival; blogs; research films and podcasts.
- To coincide with World Earth Day in April 2022, we launched an **externally facing landing page** to bring together content from across the School relating to environmental sustainability. This was updated with fresh content for Earth Day 2023.

Case Study | **UN High Seas Treaty**

LSE Law School's Dr Siva Thambisetty's research has had an impact on negotiations for the UN High Seas Treaty (or Treaty on Biodiversity Beyond National Jurisdiction), amending the text on the management of marine genetic resources. We featured this work in our [online magazine](#), our [research showcase series](#) and through a [short explainer film](#).

Next steps

- Dr Thambisetty was awarded an internal Knowledge Exchange and Impact (KEI) grant to continue this work, the next step being the ratification of the treaty by sufficient numbers of member states.

Case Study | **World Café on Sustainability, March 2022**

LSE Life and the KEI Integrated Service ran a World Café style event in March 2023 exploring the question 'Green Growth versus Degrowth' to bring LSE students and researchers together to discuss the key debates in this area.

Over 50 participants from 23 departments/institutes joined the session, listening to short presentations from six LSE researchers in between roundtable discussions. The event offered an engaging environment for sharing and learning, fostering collaborations and expanding networks.

Next steps

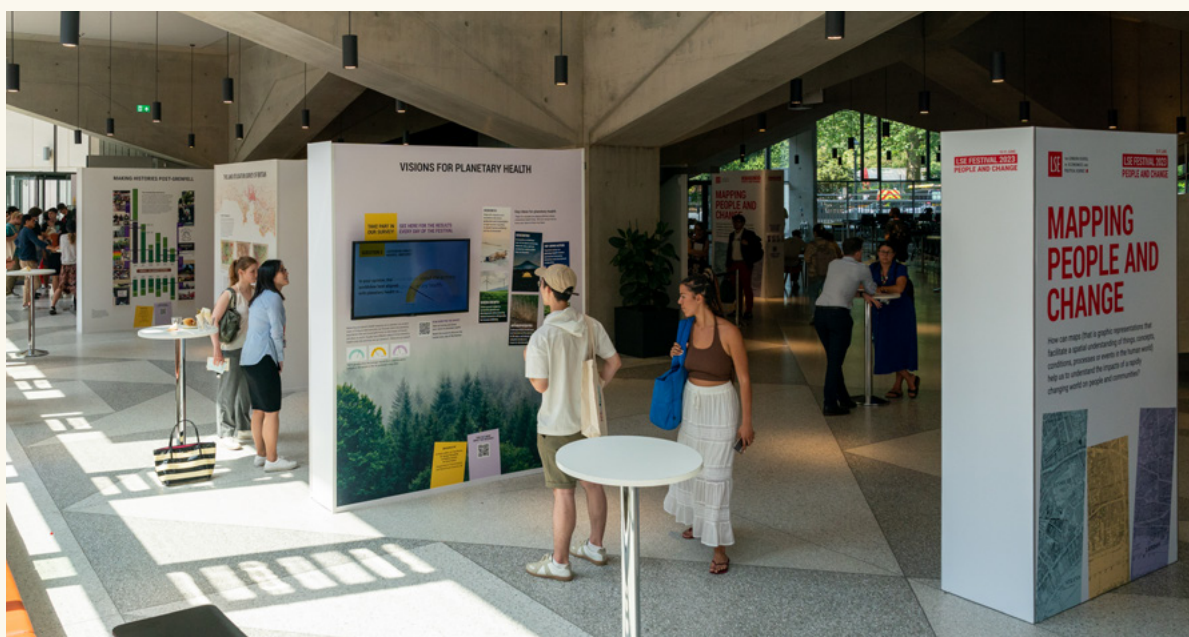
- We plan to run a further World Café session on climate change in Autumn Term 2023.



Case Study | LSE Festival 2023

LSE Festival 2023 considered the question of how people are affected by change and how people effect change, and the global response to climate change featured throughout the programme including:

- Panel discussions on **The Road to Net Zero: how to seize opportunities and manage change** with speakers including Chris Skidmore MP, and **Financing Climate Change: Inspiration for change from African thinkers** with Bogolo J. Kenewendo and Annet Nakyeeyune. The events had 139 attendees in person, 233 live online and over 13,400 podcast or video downloads.
- A short film **Understanding the Sixth Mass Extinction** which had over 700 views.
- Exhibits as part of the *Mapping People and Change* exhibition exploring planetary health, which had 2,500 unique visitors over the course of the week.



Next steps

- We will explore the ways we can contribute to the research landscape by mapping our strengths and opportunities.
- We plan to host a workshop for researchers exploring how LSE's research can contribute to shaping a sustainable world.
- We will continue to fund applications and improve awareness of funding opportunities.
- We will aim to focus and strengthen our efforts and resources on impactful sustainability research.

Engagement and leadership

Deepening public discussion on sustainability across the world



In 2022/23, LSE continued to inform and engage around the world with decision-makers to promote dialogue and decisive action on sustainability and climate change, with leadership from the Grantham Research Institute on Climate Change and the Environment.

Highlights from the Grantham Research Institute

International engagement on climate change has once again been led by Lord Stern and his team at the Institute. Standout work includes:

- A report was produced at the request of the Egyptian Presidency of COP27 and the UK Presidency of COP26 for the Independent High-Level Expert Group on Climate Finance on how to scale up finance and investment for climate and development, with Dr Vera Songwe. In follow-up, Lord Stern and Amar Bhattacharya, Visiting Professor in Practice, were invited to speak at the **Summit for a New Global Financing Pact** in Paris, which was opened by the French President.
- The Institute produced a report for the High-Level Advisory Group on Sustainable Inclusive Growth on **The big push for transformation through climate and development**.
- The Institute led a cross-university writing team on a China Carbon Neutrality Policy Framework research report that called for the Chinese government to **establish a new model of economic activity based on wellbeing**, with Min Zhu, Vice Chairman of the China Centre for International Economic Exchanges.



The Coalition of Finance Ministers for Climate Action Sherpas and colleagues from the Grantham Research Institute meeting in Helsinki, March 2023



Other highlights include the Institute's engagement with:

- The UN process, national governments and civil society organisations at **COP27**, staging and participating in events on topics from the “adaptation gap”, to aligning financial flows with net zero, to climate citizens assemblies. Then LSE President and Vice Chancellor, Minouche Shafik, **gave a speech at the opening ceremony**.
- Ministries of Finance around the world through a major project with the Coalition of Finance Ministers for Climate Action, which culminated in **a detailed guide for Finance Ministers** on strengthening their role in driving climate action, translated into several languages.
- **The UK government** on the **Independent Review of Net Zero** and, through the appointment of the Institute's Swenja Surminski to the Adaptation Committee of the Climate Change Committee, on addressing climate change risks to business and industry.
- **The UK's finance sector** on how it can support a **just transition in agriculture**.
- **Companies** on how climate change litigation might affect firm value, with a paper on this subject **winning “Best Paper Prize”** at a conference hosted at the Yale School of Management.

Case study | **Revamped research and policy resource on climate laws and legislation**

The Grantham Research Institute's **Climate Change Laws of the World** website now benefits from a new partnership with tech startup Climate Policy Radar. The upgraded site, which gives people free access to climate laws and policies from all over the world, and a suite of features to help explore them, harnesses machine learning and natural language processing techniques. This enables users to search the full text of documents in the database, consisting of thousands of climate laws and policies from every country, and to access documents from all languages translated into English. Also new is the facility to separately view documents submitted by governments to the UNFCCC.

Case study | **Expansion of the TPI Centre's sectoral coverage**

The Transition Pathway Initiative Centre (TPI Centre) has continued to expand its team, sectoral coverage and impact. The Centre, based at the Grantham Research Institute, has launched a new Net Zero **Banking Assessment Framework** in consultation with the Institutional Investors Group on Climate Change (IIGCC), to evaluate banks' progress in managing the low-carbon transition and support investor engagement. It is using the framework to analyse the climate action being carried out by the world's biggest banks, assessing them across key areas against a series of indicators. The Centre has also furthered its work as the academic partner in **Assessing Sovereign Climate-related Opportunities and Risks (ASCOR)**, a project led by asset owners, asset managers and investor networks to develop a free, publicly available, independent tool that assesses countries on climate change.

Highlights from LSE Public Affairs

- Public Affairs arranged a **briefing dinner with members of the House of Lords** and experts from LSE Law in February to discuss the provisions of the Government's Retained EU Law Bill, in particular the clauses relating to environmental law. 13 senior politicians from across the parties attended, including Lord Garnier, Lord Lisvane and Baroness Young. Suggestions for amendments and briefing notes were provided to interested politicians. The Government subsequently reviewed their position and chose not to revoke all retained environmental laws.
- Dr Leo Mercer from the Grantham Research Institute attended the **Northern Research Group** conference in Doncaster in June 2023, where he presented his research on how to decarbonise the use of land on a panel alongside Trudy Harrison MP, the Minister for Natural Environment and Land Use, and Sir Robert Goodwill MP, the Chair of the Environment Select Committee.

Case study | 2023 Evidence Week

LSE's involvement with the **2023 Evidence Week** in the UK Parliament in July focused on sustainability and green growth.

Esin Serin from the Grantham Research Institute and Arjun Shah from CEP accompanied the Public Affairs team to Parliament to present their research on the growth potential for net zero and green technologies, particularly Carbon Capture, Utilisation and Storage, and where the UK has competitive advantage and can lead internationally.

Parliamentarians attending included: Baroness Bennett (former Leader of the Green Party), Greg Clark MP (Chair of the Science and Tech Committee and former Levelling Up Secretary), and Alan Whitehead MP (Shadow Minister for Energy and the Green New Deal), and follow-up continues.



Partnership

- London became signatories to two climate-focused pledges: **The London Higher Sustainability Pledge** and the **Westminster Sustainable City Charter**, further cementing our sustainable intentions and willingness to collaborate with local partners.
- LSE has also been a participant in the Queen's Platinum Jubilee Challenge to accelerate the transition to net zero emissions in the tertiary education sector. This culminated in the release of **a sector-led proposal** on this topic in January 2023, aimed to guide action and connected thinking.
- Looking to promote circular economy as a key theme in education and research. In 2022/23, LSE became the first university in London to become a Network Partner of the Ellen MacArthur Foundation, an international charity committed to creating a circular economy.



Investment

**Making sustainability a key part
of our investment decisions**



Built through the generosity of donors, the School's endowment is a reserve to support the education of current and future student generations and university research programmes. The School also holds funds borrowed for capital investment that await deployment in building and other projects that will further these educational purposes.

As of July 2023, the School's endowments and operational surpluses had reached £342m and were invested under external advice in a variety of fund managers and passive index trackers in line with the School's Environmental, Social and Governance (ESG) Policy. Separately the School had cash and working capital portfolios of £210m. This includes borrowed funds temporarily held in bond portfolios which also follow the School's ESG approach. For example, £175m of funds were raised through the issue of the Green Bond under our Sustainable Finance Framework in 2022 (of which £125m have been received to date). Given that the amounts in borrowed funds raised for specific projects change as building projects develop and funds are drawn down, the references below to exposures within the School's ESG strategy focus on the School's endowment portfolios.

The School is a signatory of the United Nations endorsed Principles for Responsible Investment and its investment decisions are guided by our ESG Policy. Details of our approach to responsible investment can be found in the Endowment Investment Performance section of the School's annual financial statements and on our webpage.

Highlights

- We obtained Council and Committee approval for the School's new ESG policy, which was adopted in November 2022. This was established after extensive consultation with staff and students. The policy supports the School's work to reach its Net Zero targets.
- In line with the ESG policy (and previous SRI policy), the School monitors and manages its endowments' investment exposure to tobacco manufacture, controversial weapons (as defined by cluster bombs and landmines) and companies which are significantly engaged in the extraction of thermal coal and tar sands, the most polluting of fossil fuels. The targets have been tightened over the period and consequently that exposure has reduced by over 80 per cent since 2015/16. The total exposure across all the portfolios was 0.5 per cent in 2022/23 (0.3 per cent tobacco, 0.2 per cent thermal coal and no holdings in tar sands, cluster bombs or landmines).

- In line with the new ESG policy, our negative screening filters were broadened in 2022 to include any exposures to non-aligned TPI Carbon Performance rated companies in oil and gas production, oil and gas power generation, oil and gas refining and marketing, oil and gas midstream, oil and gas integrated, oil and gas equipment and services, oil and gas E and P and oil and gas drilling.
- The portfolios within the endowment that invest in active managers have added funds that are aiming to curb or mitigate the long-term effects of global climate change, to address the environmental challenges presented by climate change and to improve the efficiency of resource consumption.
- The School joined the Institutional Investors Group on Climate Change and to collaborate with other investors on best practice towards Net Zero.
- LSE completed its annual submission to the Principles of Responsible Investment (PRI). It is also worth noting that all of the portfolio's underlying fund managers are signatories of the Principles of Responsible Investment (formally the UNPRI). Of the fifteen equity managers, thirteen have been awarded a four or five-star rating for their approach to Policy, Governance and Strategy
- The School drew down another £50 million of private placement debt that was issued under the School's Sustainable Finance Framework which is to be used for green and social projects.

Next steps

- In line with the ESG policy, we will continue to review and update our negative screening filters to limit the School's exposure to non-aligned companies in oil and gas production, oil and gas power generation, oil and gas refining and marketing, oil and gas midstream, oil and gas integrated, oil and gas equipment and services, oil and gas E and P and oil and gas drilling as rated by the TPI's Carbon Performance metrics. Should a manager fund trigger the School's limits we will seek to replace the manager if any discussions on these exposures leads to no improvement.
- We are looking to undergo an assurance exercise and prepare an impact and assessment report for the funds issued under the Sustainable Finance Framework to confirm that these were spent in line with the framework.

Collaboration

Working in partnerships
within LSE and externally



Highlights

Green Impact

Green Impact is LSE's sustainability engagement programme for staff, that has been running for many years. The 2022/23 Green Impact programme continued with strength this year. Teams sign up voluntarily to take part and complete sustainable actions across the academic year.

This year's programme had a focus on our Future Ways of Working strategy, with actions suited for both completion in the office, as well as in the home-working environment. 2022/23 saw 26 teams sign up and 18 receive awards (with nine of those achieving platinum). Over 450 sustainable actions took place because of Green Impact.

Examples of actions completed as part of Green Impact include:

- Several teams went out volunteering for environment-focused causes.
- Essay and photo competitions in divisions/research centres focused on climate change.
- Many teams adopted regular sustainable (low carbon, plant-based) team lunches as a result of Green Impact.
- LSE Bankside house created a display highlighting how long plastic takes to break down.

Teams were awarded during the sustainability segment of LSE's Values in Practice Awards in June 2023 ([**see Sustainability Awards**](#)).



Sustainable Projects Fund

Funded by a 25p tax on bottled water sales at LSE Catering, the Sustainable Projects Fund offers up to £20,000 annually for student and staff-led projects that enhance sustainability at LSE. **This year the fund approved five projects** including:

- The creation of three **sustainability-focussed maps** by LSE Cities, highlighting sustainability initiatives and services within a 15-minute radius of campus.
- Funds to support the creation of “Blankets for the Displaced”. An undergraduate student formed a group of student and staff volunteers to sew together deadstock fabric, which would otherwise be classed as textile waste, into two-ply blankets to be sent to refugees.
- Funds for the “Great Food Fight” in LSE Halls. This student-led project collected unwanted food from students in all LSE-managed halls of residence, as they moved out, and took anything that met the criteria to local food banks.
- Repair Week, which ran in March 2023, is a week full of events put on by local authorities, businesses and individuals that inspire the art of repair, to reduce waste and save money. The LSE sustainability team used awarded project funding to run a clothing Repair Café and Mending Workshop at LSE (in collaboration with Kings College London) and a bike repair workshop on campus.
- The US Phelan Centre have organised an exhibition scheduled for November 2023 to coincide with COP 28, which will bring together artistic reflections from LSE students and staff on the era-defining challenge posed by climate change. The exhibition was part-funded by the Sustainable Projects Fund.







Learn how to fix your clothes!

Tuesday 21 March

Kings x LSE Sustainability teams are collaborating with Emma Mathews (right) to run two events to help you learn the practical skills needed to repair your own clothes.

- 1 Repair Café**
Do you have a particular item that needs mending?
- 2 Clothing Mending Workshop**
Do you want to learn basic repair skills but unsure where to start? This is for you!



#RepairWeekLDN



#SustainableLSE in Halls

For the second year, all LSE-managed Halls took part in the #SustainableLSE Halls campaign. The programme aims to reduce energy and water consumption, improve recycling rates, through engaging with students and staff and highlighting the importance of doing so.

Highlights in 2022/23 included:

- 398 students engaged in the campaign (19.4 per cent of total residents), with 87 per cent claiming they now know more about how everyday actions contribute to the climate crisis and how to drive change.
- 62 tonnes of CO2 saved this year vs baseline year 2021/22 data that's around 4,160 average London bus journeys and £40,536 saved in energy costs.
- 9 students were also trained as campaign volunteers, to increase awareness of, and support for the campaign.
- Bankside Hall were well-deserving winners for this year's competition, but all teams put in a tremendous effort, which is terrific to see.

In addition to the #SustainableLSE Halls campaign, several other initiatives relating to sustainability were carried out in halls too.

- Launched a Halls Swap Shop in October 2022, with a permanent rail housed in Bankside and Urbanest Westminster. This allows students to 'donate' their clothes to the rail and swap for any existing items. To launch the rail, we held a workshop on natural tie dying to upcycle clothing or bags, a leathercraft workshop using offcuts, and a repair café.
- All LSE-managed halls took part in Green Impact, LSE's staff sustainability engagement programme, as separate teams.
- Selected LSE Catered Halls have been working to reduce food waste using Winnow and been running a multi-channel campaign to raise awareness of low carbon options available at each dinner sitting (LSE catering uses carbon impact labelling system on its hot food dishes).
- We have been developing the **Sustainability tab on Halls Life**, producing content in-house, as well as commissioning student-produced blogs. We have also commissioned several student-produced vlogs on "how I try to live sustainably in LSE Halls".

Next steps

- We aim to embed the Sustainable Halls Campaign further with hopes to achieve over 400 students engaged across 2023/24). We also hope to recruit and train a team of students to conduct two recycling audits across the LSE-managed halls.
- We will be signing up with **Hazaar**, a sustainable student marketplace, to help create a circular economy for fashion and create a community of buyers and sellers at LSE.
- We hope to maintain high levels of satisfaction with sustainability in the 2024 Residences Accommodation Survey.
- We aim to further integrate with LSE Residential comms to ensure clear messaging around sustainability initiatives (such as recycling, events) and inspire sustainable living in students in halls.



Green Week

Coordinated by the LSESU Environment and Ethics Officer and the LSE Sustainability Communications and Engagement Officer, this year's Green Week brought together the LSESU and various teams across LSE.

Events this year included:

- Two panel discussions on careers in sustainability
- A webinar on community organising and changemaking (hosted by Citizens UK)
- A webinar on Greenwashing 101
- The opening of the LSESU Charity Shop on campus
- A climate-focused World Café
- Planting session
- Wellbeing walks

Green Week is a strategic chance to engage the LSE community with sustainability topics.



LSE Volunteer Centre

The School's Volunteer Centre helps students and staff find volunteering placements as well as one-off opportunities e.g. The Felix Project, Greenwich Ecology Park.

In 2022/23 environmental, conservation or animal-related organisations were the 4th most popular type worked with (up from fifth last year). Students top three motivations for volunteering this year remained the same: improving things, giving back to society and personal values.

Next steps

- Increase the number of environmental sustainability charities linked up with the LSE Volunteer Centre, so that students have plenty of opportunities to connect with sustainability opportunities and take positive action.
- Run, or set up through external organisations, several one-off volunteering options such as litter picks, tree planting etc.
- Explore options for students to volunteer with the Sustainability Team.

Case Study | London Student Sustainability Conference

LSE was one of ten London Higher Education Institutions involved in organising the collaborative London Student Sustainability Conference in February 2023. The conference was an opportunity for students from across London to come together to share their research and projects that aim to make the world a more sustainable place. Hosted by Kings College London, the event gave a platform to 36 student presenters, 58 student poster exhibitions and workshops. LSE was delighted to receive the highest number of student applications to present or submit a poster related to the Sustainable Development Goals (SDGs).

Over 114 attendees joined in person throughout the day to listen to the presentations and take part in the Q&A's, with a further 133 joining online.

In the evening, delegates were invited to join an in-person networking event hosted in the Great Hall at King's College London, where all 58 conference posters were displayed and opportunities to continue the conversations were provided.

Next steps

- We will continue to be involved in the planning of the London Student Sustainability Conference 2024, aiming for a strong number of LSE student applications to present, and delegates.
- Work with the Communications Division to spotlight the LSE student research after the event.



Our School

Reaching net zero carbon and reducing our direct environmental impacts



Carbon

Measure, reduce and mitigate our carbon emissions.



Energy

Operate a highly energy-efficient estate and adopt renewable energy sources.



Waste and Resources

Reduce waste and adopt circular economy principles of resource management.



Buildings

Adopt the highest environmental standards in our construction and refurbishment projects.



Water

Reduce consumption on campus and residences.



Catering

Providing sustainable and healthy food options at LSE Catering outlets.



Responsible procurement

Embed sustainability in our supply chain.



Pollution and air quality

Minimise pollution and improve air quality.



Travel

Reduce emissions associated with commuting and business travel.



Biodiversity and green spaces

Enhance biodiversity on the LSE estate by protecting and connecting habitats.

Visit our [webpage](#) for further details.





Carbon

Measure, reduce and mitigate our carbon emissions

Highlights

- Our scope 1 and 2 carbon footprint has reduced by 44 per cent since 2005. Our 2022/23 carbon footprint for scope 1 and 2 emissions was 7,422 tonnes tCO₂e. Our carbon intensity was 34.5 kg CO₂e/m², a 54 per cent reduction since 2005/06.
- For the third year, we have purchased carbon removal offsets for all the emissions we measure (scope 1 and 2 for our energy use, and scope 3 for water, waste and business travel).
- Our carbon credits form a carbon removal focused portfolio consisting of mangrove conservation and reforestation programmes. These credits were selected by the LSE community by popular vote from three tailored portfolios and were explored in detail at a workshop with our carbon offsetting partner, Compensate.
- We have started to implement our Carbon Reduction Strategy, aiming to become net zero by 2030 for our direct energy use (scope 1 and 2) and by 2050 for all our indirect emissions (scope 3). To do so, we have been actively working on decarbonising our heating systems. In 2022/23, we have completed our first electrification project, the Cheng Kin Ku building, where we replaced the boilers and chillers with more sustainable air source heat pumps ([see Buildings for case study](#)). Several other decarbonisation projects are underway.

Next steps

- We will continue to decarbonise the heat on our campus buildings in line with our Carbon Reduction Strategy.
- In light of current discussions surrounding the use of carbon offsets to mitigate emissions, the Sustainability Leadership Board is reviewing its approach to the use of carbon offsets.
- We will continue to work on our scope 3 emissions to better understand them.

Carbon Footprint 2022/23

Type of emissions

Emissions sources

Carbon emissions

Tonnes of carbon equivalent (tCO₂e)

Scope 1

Direct emissions from our activities



Gas and fuels
used to heat and operate our buildings

3,651 tCO₂e

Scope 2

Indirect emissions from our electricity use



Electricity
used for lighting, IT equipment, ventilation...

17 tCO₂e as 99 per cent of our electricity is sourced from renewable sources

3,771 tCO₂e if using the UK electricity grid average carbon intensity factor

Scope 3

Indirect emissions associated with our activities and supply chain



Water consumed



Waste generated

- On campus
- Construction



Business travel

Air and rail booked through LSE central supplier

Water: 68 tCO₂e

Waste: 30 tCO₂e

Business travel: 2,432 tCO₂e

▲ Emissions measured

▼ Emissions not yet measured

Other business travel: expenses, hotels, taxis



Staff/students travel

Commuting to campus



Goods and services

All things we purchase, including for construction projects





Energy

Operate a highly energy-efficient estate
and adopt renewable energy sources

Highlights

- Our energy consumption for 2022/23 was 38,162 MWh, which represents a nine per cent decrease against 2021/22 and a three per cent reduction against our 2005/06 baseline. This decrease against last year is due to the end of the covid-safe measures in place in 2021/22, as well as an active management of our heating controls and set points, optimising them on a daily basis to reduce our gas usage.
- Our energy usage per gross internal area was 177.3 kWh/m² in 2022/23, which is a 22 per cent reduction since 2005/06.
- In 2022/23, we produced over 102 MWh of electricity thanks to our photovoltaic panels. This is enough to power one of our buildings, Cowdray House, for a year. In addition, 100 per cent of the electricity we purchase is from renewable sources (e.g., solar and wind).
- Driving high energy efficiency standards continues to be a key aspect of how we conduct building refurbishments and design new buildings (**See Building section for details**).

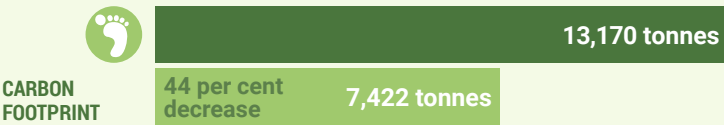
Next steps

- We will identify further opportunities for energy-efficiency measures.
- We will develop a plan to decarbonise our heat.
- We hope to improve estate efficiency to achieve 150 kWh/m² by 2025.

Energy usage (and associated carbon emissions)
in relation to 2005/06 baseline year

2005/06

2022/23





Waste and resources

Reduce waste and adopt circular economy principles of resource management

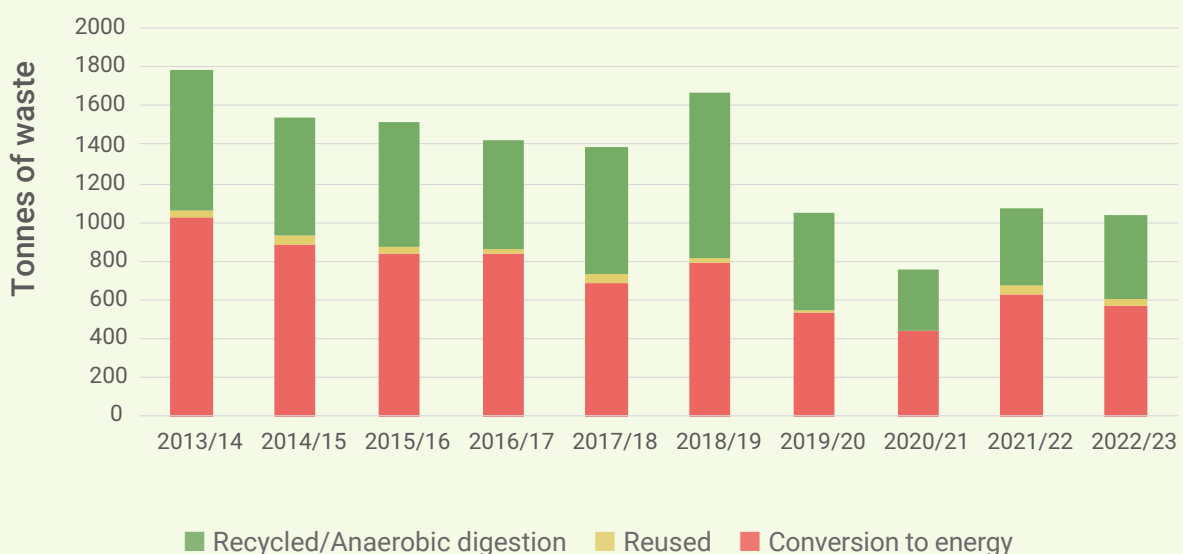
We apply the “Prevent, Reduce, Reuse, Recycle, Recover” waste hierarchy in our waste and resource management, and continue to encourage the LSE community to think “digital by default” as part of our **Digital Smart LSE campaign**, and promote waste-reduction and circularity at the School.

LSE’s total waste volume (excluding construction waste) in 2022/23 was 1,037 tonnes, of which 58 per cent was reused or recycled, resulting in zero waste to landfill (aside from a small fraction of construction waste) achieved this year.

Highlights

- In line with easing COVID-19 restrictions, there was a 76 per cent decrease in clinical waste (e.g., PPE) disposed of throughout the campus and residences.
- TRAIID, a charity working to stop clothes going to waste, collected 8.8 tonnes of clothing and shoes from LSE across the year, with an approximate emission saving of 79.5 tCO₂e between August 2022 to September 2023. This is the equivalent to an embodied water saving of 14,145 m³. This amounts to approximately £25,000 worth of garments being diverted from landfill and either recycled or reused; with residences supporting a **Circular Economy** approach.

LSE waste tonnage by end destination (excl. construction)



- 4.3 tonnes of unwanted items were donated to the British Heart Foundation by LSE halls during the annual “ReLove” moving-out donations campaign, with a value to the charity of £7,546 and equivalent to an emission saving of 43.9 tCO₂e.
- 16.32 tonnes of surplus books were donated to the **UK Book Rescuers organisation** who remove books in a sustainable manner by reusing or responsibly recycling the books.
- Bin signage was updated and standardised across campus to improve clarity of waste communication.
- The #SustainableLSE Halls campaign 2022/23 successfully encouraged students within the LSE-managed halls of residences to increase recycling rates through behavioural science nudges, audit findings, improved signage and education. Halls of residences at the end of this campaign reported strong engagement with recycling signage and assessing contamination.
- LSE announced Partner status with the **Ellen MacArthur Foundation**, an international charity committed to creating a circular economy (**see Engagement and Leadership**)

Next steps

- We will explore introducing single use vape recycling points on campus and within residences, along with promotional material, to encourage students and staff to conscientiously dispose of their vapes.
- A trial on the provision of bins specifically for recycling single-use coffee cups has now ended. The trial looked at the success of waste segregation and usage rates. We will look to make the separate recycling of coffee cups permanent in 2023/24 with the aim to receive student feedback on bin locations and signage.
- We will continue to update and distribute waste-related signage and educational material across campus and residences to make awareness and knowledge as accessible as possible.
- We hope to launch Hazaar, a sustainable online marketplace for the whole LSE community, during 2023/24, further creating a circular economy for resources at LSE.





Buildings

Adopt the highest environmental standards
in our construction and refurbishment projects

Case Study | 35 Lincoln's Inn Fields

Our newest building project, 35 Lincoln's Inn Field (to be named the Firoz Lalji Global Hub) will be our first net-zero building in construction and operation, and built to

Passivhaus standards. The design has now reached the Royal Institute of Architects (RIBA)

Stage 3 with the Estates Division, including the Sustainability Team, advising from the client side. Circular economy principles of design

have been incorporated, such as material retention, reuse, and recycling of the building fabric, including looking at end-of-life scenarios for building materials. Sustainability has been consulted when exploring how the building will impact air quality, energy and carbon, landscape, BREEAM and more.



The winning design submission, from David Chipperfield Architects, can be [seen here](#).

Case Study | Electrification of Cheng Kin Ku Building (CKK formerly NAB) and the Old Building

Work is completed on the electrification of Cheng Kin Ku (CKK formerly NAB) as the first building in the Carbon Reduction Programme to go fully electric. This involved removing the gas boilers in the basement and chillers on the roof and replacing them with more sustainable Air Source Heat Pumps. Electrification of the CKK Building will reduce gas usage on campus by approximately eight per cent, driving us towards the target of Net Zero Carbon (scopes 1 and 2) by 2030.

As part of refurbishment works, the Old Building is also undergoing an electrification project to create a cleaner low carbon operation for heating the building. Similar to CKK, the project will use heat pump technology that will result in a 70 per cent reduction in carbon emissions for the building once actualised. Mechanically ventilated heat recovery units are to be installed to reduce heat losses. In addition, 75 per cent of existing lighting is to be replaced by highly efficient lighting with built-in occupancy and daylight controls.



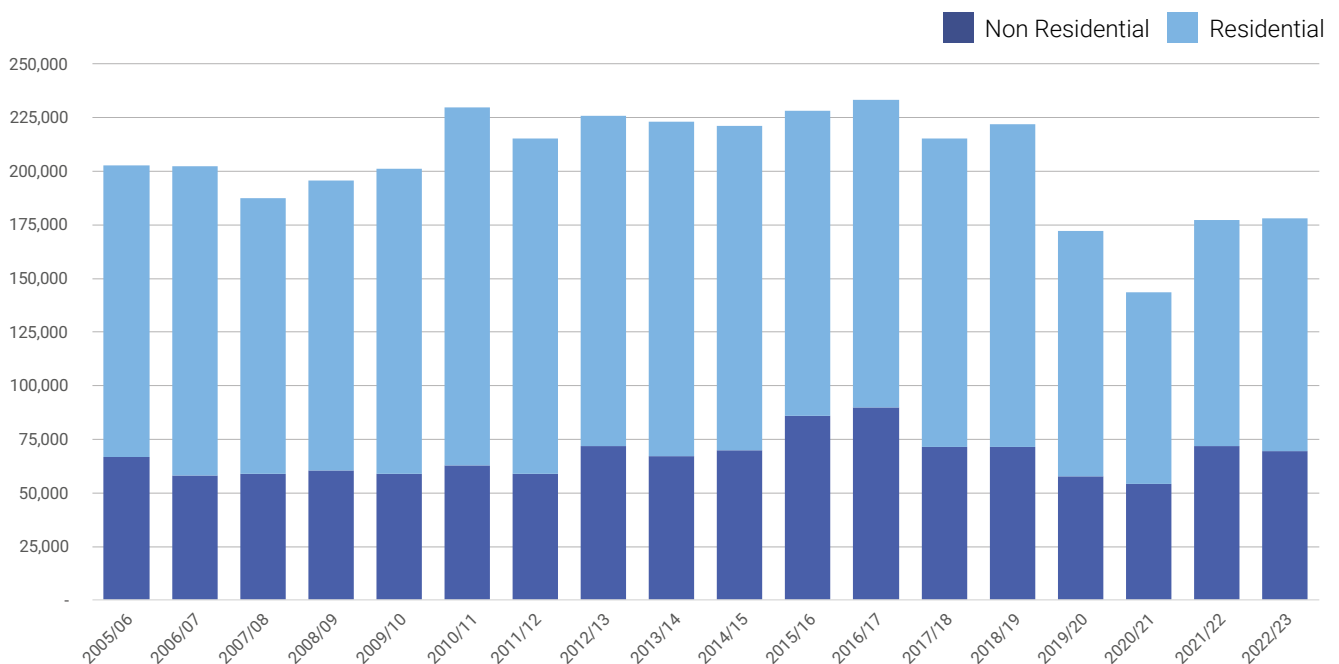
Water

Reduce our water consumption on campus
and in Halls of Residence

Highlights

- In 2022/23 we consumed 178,154 m³ of water, an increase of only one per cent compared to 2021/22.
- We continued to implement water efficiency measures with a particular focus on leak detection systems and we continued to replace taps with water-efficient ones.
- We have continued to improve our water monitoring.

LSE's water usage 2005-2023 m³



Next steps

- We will endeavour to further improve our water monitoring and install smart meters where possible.
- We will continue to develop a water management strategy and identify measures to significantly reduce our water usage by 2030.



LSE Catering

Providing sustainable and healthy food options at LSE Catering outlets

Catering Awards and Certifications

- We achieved recertification for the Sustainable Restaurant Association's "Food Made Good" three-star rating in our four catered halls and three main restaurants in 2022.
- Our four catered halls of residence achieved Soil Association Silver "Food for Life" award and the LSE Garrick and Shaw Café achieved re-accreditation for Bronze in 2022.

Highlights

- Winnow, an AI food waste monitoring and measurement system, continues to be used in Bankside Hall, following its introduction last year. The system is producing weekly management reports, which are being utilised for creative behavioural nudges, reductions in serving sizes, and changes in ordering. In 2022/23, there was a reduction in student food waste of 20 per cent as a result, saving 4.3 tCO₂e.
- Our Carbon Labelling scheme was viewed by a delegate from Tel Aviv University to research and learn from LSE's experience, exporting the advice internationally and receiving positive feedback. For the academic year 2022/23, high carbon dishes were responsible for only 3 per cent of hot food sold, whilst medium carbon made up 42.5 per cent and low carbon made up the majority of sales at 57 per cent.
- The Catering Environmental Working Group continued to build collaboration between LSESU, Student Societies, LSE Catering, Academic Researchers, and the LSE Sustainability Team.
- New coffee machines were installed across our four catered halls which offer users oat milk as well as dairy, making it easier to choose a more sustainable option.
- LSE Garrick, Beveridge Café, Plaza Café, Café 54 and Shaw Café are now registered on the "Too Good To Go" (TGTG) App, regularly listing discounted food items towards close. By May 2023, over 2100 meals had been sold via TGTG, equating to 5.3 tCO₂e saved. LSE Catering worked with LSE Sustainable Futures Society to promote this to the student population, as the meals are heavily discounted.



- We continued to promote reusable LSE branded hot drinks cups, including securing Small Bids to offer further discounted cups. We explored alternative returnable cup schemes (such as Club Zero) with our sector peers.
- A pilot study by a PhD candidate, Heidi Zamzow, was conducted in the catered halls over Spring 2023, looking to nudge behaviour away from high carbon dishes. The results indicated value-based social norms messaging was not effective on its own in increasing uptake of low carbon meals. These findings will inform future study iterations, but it seems focusing on taste and health of low carbon dishes could be an important avenue, rather than just the sustainability, or improving the visibility of messaging.
- We added additional ranges of sustainable items to the LSE Shop and are exploring UK-produced merchandise to reduce the transport footprint.



Next steps

- We will further adapt our targeted behaviour change campaigns using the Winnow AI system data at Bankside Hall to hopefully see continuing reductions in student plate waste.
- We are looking to explore options for a new reusable and sustainable LSE-branded water bottle to be sold in LSE Catering outlets/LSE Shop.
- We will build on the success of the “Too Good To Go” App, working collaboratively with LSE Sustainable Futures Society students to redistribute surplus food.
- We will continue to work with a PhD candidate, Heidi Zamzow, on behavioural nudges to reduce high carbon dish consumption, as well as LSE students on their own sustainability project ideas in relation to sustainable catering.
- We will further work to reduce packaging waste associated with merchandise in the LSE Shop, speaking with suppliers to explore alternatives.



Responsible procurement

Make sustainability a key consideration of our purchasing decisions and supplier relationships

Highlights

- Our **Supplier Code of Practice** has been included into all of our tender projects and contracts which have resulted from a tender process. Our suppliers are being asked to support and, where applicable, report on the different principles.
- Our Procurement Strategy has been changed and we have completed a risk assessment on each sub-category against the Supplier Code of Practice nine key principles. We are proposing to provide tender questions for each high and medium assessed principles for future tenders. One of these principles, includes “Protect the environment by reducing the carbon emissions and environmental impacts of their products and services”. This will be considered in the tender and contract management stages going forward.
- We created a dashboard in 2021/22 which takes into consideration “risks”, including Environmental/ Sustainability (originally set up for Modern Slavery, but which encompasses sustainability). In 2022/23, these considerations have been applied against each tender and appropriate assessments have been included. The procurement team now monitors our main suppliers against these risks and ensures they are being assessed against their independent risk assessment system, as well as using Construstonline and our Supplier Code of Practice.
- In 2022/23, we conducted a tender for desktop computers and laptops. The NDNA framework agreement created by the LUPC includes Electronics Watch clauses to require our suppliers to disclose the factory details for our IT equipment. This information is then shared with Electronics Watch, whom with support from in-country monitoring partners, conduct worker-led human rights due diligence audits on the factories. Any issues found are reported to our suppliers and the joint purchasing leverage of LUPC membership ensures actions are taken by our suppliers to remedy any issues found.

Next steps

- We are working with The University Caterers Organisation (TUCO) and our suppliers in investigating responsible procurement in supply chains for food from our Catering Services.
- We will be setting up a reporting system to review and monitor responsible procurement for future tenders.



Pollution and air quality

Minimise pollution and improve air quality and supplier relationships

Highlights

- Sustainability team helped realise the nearby **Strand Aldwych redevelopment** with the completed scheme via Westminster City Council. The sustainable urban development greatly enhances the urban realm by contributing pollinator-supporting plants that, among other benefits, are supporting local air pollution mitigation measures.
- We have worked with Westminster City Council who are undertaking a traffic and air pollution monitoring assessment with external consultants over a six-month period (Jun-Aug 2023) who will report back to stakeholders prior to January 2024.
- We continue to host King's College London air and noise pollution sensors for their academic-led and European-funded **Horizon 2020 RESET project**.

Next steps

- Once we have received the latest air pollution and traffic data from Westminster City Council from the Strand Aldwych redevelopment scheme, we will take informed action where required.
- We will review and update the LSE Air Quality Position Statement, so it reflects best practice and the current Central London urban environment that our School operates within.
- We will continue to collaborate with academics and innovative solutions to monitor and mitigate air pollution where possible; and integrate this within academic research outputs.
- We will explore raising awareness of how best to mitigate exposure to air pollution whilst attending LSE, including promoting online pollution-avoidance maps.
- We will explore ways to further encourage green/active travel, as a method of reducing air pollution in London (**see Travel**).



Travel

Reduce emissions associated with commuting and business travel

Highlights

Commute to campus

- Following collaboration between the Estates Division and the LSE Bicycle User Group, we have increased the number of cycle parking spaces on campus from 538 in 2018/19 to 1,043 in 2022/23, a 94 per cent increase over the last four years.
- LSE staff continued to benefit from the Cyclescheme, which saves buyers up to 30 per cent on the purchase of a bike or on the rental of a Santander bike. In 2022 and 2023, 111 staff members took advantage of the Cyclescheme.
- Over 75 members of the LSE community benefitted from free bike checks and repairs through our termly Dr Bike pop-ups on campus.
- LSE Cities Green Impact team, with support from LSE Sustainability, produced three **15-minute sustainability maps**. One of these maps, on Green Spaces and Sustainable Mobility, highlights sustainable travel options. We hope this will make it easier for the LSE community to locate cycle facilities.

Business travel

- All air and rail travel booked by departments through our travel management company now include the purchase of high-quality carbon credits to mitigate carbon emissions for those journeys that are necessary. LSE Sustainability have produced a 'Sustainable Business Travel Guide' and are working with academics and departments, including GRI and Department of Economics, to spread the messages.
- In 2022/23 LSE staff took just over 3,846 air and rail journeys, covering 12.18 million kilometres and emitting 2360 tonnes of carbon. 99.5 per cent of these emissions were linked to air travel. This is an almost 56 per cent reduction in carbon emissions compared to our baseline year of 2018/19, but we are aware that travel might still be reduced as a result of COVID-19 lockdowns.
- Our **Digital Smart** campaign continued to be used as part of our work to encourage rational thinking about business travel. The campaign champions digital solutions (e.g., online conferences and meetings, pre-recorded keynotes) to reduce our reliance on business travel.

Next steps

- LSE's travel plan for 2023/2024 is currently under development, with the aim to incorporate student and staff travel behaviour. The travel policy will then be updated to encompass this feedback and assist in managing changes to travel presented by a post-pandemic world.
- We will work with departments to increase the number of journeys booked through our travel management company rather than claimed through expenses to improve the quality of data we capture for purchasing carbon credits.
- In 2023/24, we are going to be working with a new travel management company, and to coincide with this change we will be working on a communications campaign around the sustainability of business travel. As part of this, we aim to connect with departments, examiners, students, events team and more to encourage reductions.
- We will put forward a staff-proposed project to LSE Changemakers, for a student to apply to help us with research on student travel patterns across the academic year. This will directly help us with our Scope 3 mapping work on student flights and associated CO2e.
- We will explore becoming an accredited Cycle Friendly Employer, which will enable even more support for those cycling to campus. We will look to explore a staff communication focus on cycling in Spring 2024.





Biodiversity and green spaces

Enhance biodiversity on the LSE estate by protecting and connecting habitats

Highlights

- We have worked with Westminster City Council to complete the Strand Aldwych enhancements, with pollinator supporting planting widening and linking local biodiversity corridors to campus.
- New roof terraces on the Marshall Building are bedded in providing foraging for pollinators (LSE bees, butterflies, hoverflies, bumblebees and ladybirds); whilst enhancing student and staff social environments.
- We reviewed and provided guidance to landscape architects on 35 Lincolns Inn, LSE's first net zero building in construction and operation. For biodiversity, we advised on ideas to enhance LSE's biodiversity value and stressed the importance of creating a biodiversity corridor extension to Lincolns Inn Fields.
- We re-certified for bronze hedgehog Friendly Campus accreditation in January 2023. The award engaged both students and staff with practical actions to support hedgehog populations.
- We installed an automatic Irrigation System on the LSE bees perimeter planters, enhancing plant growth and foraging: supporting the LSE bees in immediate locality.
- 105 tree saplings (of various breeds) were planted at the LSE Sportsground during a staff volunteering day, providing biodiversity habitats and aiding sequestration of carbon.
- We ran two staff rooftop tours sessions in November 2022 and April 2023 introducing people to biodiversity areas on LSE roofscapes and sustainability features across campus. Both these tours proved very popular and were oversubscribed.
- We coordinated learning sessions to the hives regularly for the LSESU Beekeeping Society and further staff groups, alongside our professional beekeeper.
- We ran LSE Bees visits to the two existing full colonies and took Q&A sessions from staff and students with our professional beekeeper. LSE bees had a record season producing 420 jars of honey! The LSESU Beekeeping Society will sell these to raise funds for looking after the bees and society educational experiences.





Next steps

- We will extend the automatic irrigation system to cover the remaining sections of the LSE bee's perimeter planters.
- We will rear two new Queens at LSE for the first time, with the aim of expanding the main colonies from two to three or four (season dependent).
- We will continue to provide professional biodiversity advice to the development of 35 Lincoln's Inn Fields as LSE's first Net Zero Carbon building takes shape.
- We will look to plant 150+ more tree saplings at the LSE Sportsground and explore ways that we can plant more on campus, for example Connaught House rooftop.

Sustainability Awards



Our annual celebration of sustainability highlights achievements and projects across the year that bring about positive environmental impact.

Our 2023 event was combined with LSE's School-wide Values in Practice (VIP) Awards, which took place on 22 June 2023. This gave the sustainability awards wider exposure to staff members across LSE, with over 230 staff members in attendance.

Green Impact Results

Platinum

Department of Government, Department of Management, Department of Methodology, LSE Careers, LSE Catering in Halls, LSE Catering on Campus, LSE Cities, LSE Estates and Phelan US Centre

Gold

Passfield Halls of Residence and Rosebery Halls of Residence

Silver

Bankside Halls of Residence, Carr Saunders Halls of Residence, Finance Division, High Holborn Halls of Residence and University of London Programmes.

Bronze

Butlers Wharf Halls of Residence and LSE Events

Green Impact Sustainability Champions

Ana Martinez-Badia, Catering in Halls
Lewis Humphreys, LSE Careers
Natalia Sullivan, Department of Management

Sustainable LSE Halls Campaign Winner

Bankside Halls of Residence

Sustainability Champions

Students

Rhea Bhatnagar, PGT Department of Geography and Environment

Hannah Valentien-Barnes, UG Department of Geography and Environment

Staff

Dave Sutton, Events Manager, LSE IDEAS
Mohid Rehman Malik, US Projects Assistant, US Phelan Centre

Special mentions

Department of Social Policy Green Champions: Katarina Benkova, Hannah Singleton, Anisha Chandrasekar, Neap Yanith Chea, Shahana MP, Samuel Goodger, Ishita Puri, Shreya Prabhakar, Janhavi Jadhav, Alend Gravi, Tejashwini Shankar and Jakob Abekhon

nus

green impact



Continue the conversation...

lse.ac.uk/sustainableLSE

sustainability.team@lse.ac.uk



Help LSE maximise its impact in
shaping a sustainable world by donating
to the [Sustainability Impact Fund](#).

Sustainability Team, Estates Division
The London School of Economics
and Political Science
Houghton Street
London WC2A 2AE

Estates reception: 020 7955 6477

This information can be made available in alternative formats,
on request. Please contact, sustainability.team@lse.ac.uk

The London School of Economics and Political Science is a School of the University of London. It is a charity
and is incorporated in England as a company limited by guarantee under the Companies Acts (Reg no 70527).

The School seeks to ensure that people are treated equitably, regardless of age, disability, race, nationality,
ethnic or national origin, gender, religion, sexual orientation or personal circumstances.

Design: LSE Design Unit (lse.ac.uk/designunit)

Photography: Rosie Coffey, Ellie Cottrell, Maria Moore, Nigel Stead